



geomagic

**STUDIO**<sup>®</sup>

geomagic

**QUALIFY**<sup>™</sup>

geomagic

**WRAP**<sup>®</sup>

SIMPLE. INTEGRATED. POWERFUL.

THE LEADING REVERSE ENGINEERING  
AND INSPECTION SOFTWARE

# ABOUT GEOMAGIC

Geomagic is a leading provider of 3D software for creating digital models of physical objects. The company owns six patents and numerous awards for technologies that accelerate design, reverse engineering and quality inspection of parts and products. Geomagic is based in Research Triangle Park, NC, USA, with subsidiaries in Europe and Asia and partners worldwide.

Geomagic's vision is to advance and apply 3D technology for the benefit of humanity. Geomagic-based technologies impact areas vital to the economy and everyday life: competitiveness, speed to market, quality, greener processes, product personalization, better patient care and gentler, more effective medical treatment. According to Inc. magazine, Geomagic is "leading a modern industrial revolution that will make customization cheap and outsourcing obsolete, and forever change the way things get made—from turbines to artificial hearts."

Applications of Geomagic include ensuring the safe return of the NASA space shuttle; digital processes at Timberland that cut waste by 75 percent; new inspection workflows at Pratt & Whitney, Schneider Electric and Alcoa Howmet that improve quality and dramatically reduce inspection time; and revolutionary treatment of cleft lip and palate at Shriners Hospitals for Children, selected by Desktop Engineering magazine as a "Rapid Technology That Will Change the World."

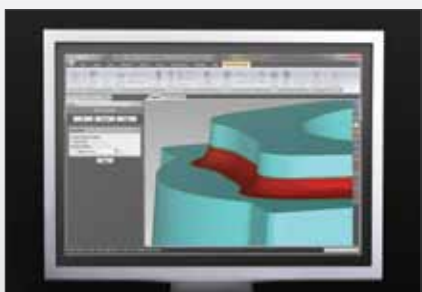


geomagic

# STUDIO®

## 3D REVERSE ENGINEERING SOFTWARE

Geomagic Studio delivers the industry's best solution for transforming 3D scan data and polygon meshes into accurate, surfaced 3D digital models for reverse engineering, product design, rapid prototyping and analysis. The fastest way to convert 3D scan data into parametric CAD models, Geomagic Studio delivers a wealth of features that revolutionize the digital content modeling and manufacturing process.



Increase productivity in design and manufacturing workflows by quickly and accurately modeling existing parts and physical objects.



Optimize work time by using the fastest path to CAD from points and polygon data.



Manufacture with confidence that your designs accurately reflect as-built products and real-world conditions.

### FEATURES INCLUDE:

- Rapidly and automatically create accurate polygon meshes, NURBS surfaces, and parametric CAD models for use downstream
- Easily create and modify complex 3D polygon data from dense point clouds
- Integrate with major 3D MCAD systems, as well as export to standard formats in STL, OBJ, VRML, DXF, PLY, 3DS, PDF
- Support for a wide range of standard scanner equipment
- State-of-the-art User Interface for fast and intuitive operation

### YOUR FREE TRIAL:

To get started, visit:

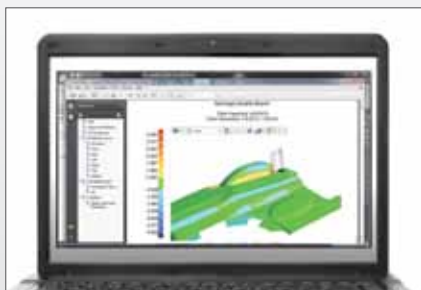
[www.majentasolutions.com/geomagic](http://www.majentasolutions.com/geomagic)

geomagic

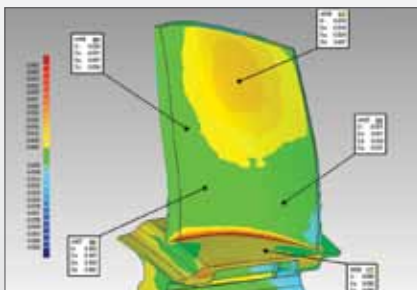
# QUALIFY™

## 3D INSPECTION SOFTWARE

Geomagic Qualify delivers the leading edge in fast, accurate, graphical comparisons between digital reference models and as-built parts for first-article inspection, production inspection and supplier quality management. With best-in-class reporting capabilities, Geomagic Qualify's powerful report designer allows you to design and customize inspection reports to meet the requirements of your organization. Geomagic Qualify is also the first inspection software that allows you to share your results with fully interactive 3D documents that can be viewed by Adobe Reader.



Build manufacturing efficiency by inspecting products in a fraction of the time using accurate 3D data. With Geomagic Qualify, inspection and approval is completed in hours instead of weeks using the powerful features of this leading technology.



Improve manufacturing accuracy through rapid and in-depth product and process assessment of out-of-tolerance conditions of manufactured parts.



Manufacture parts with certainty that strict quality standards are being met. Geomagic Qualify is certified by PTB (Physikalisch-Technische Bundesanstalt), evaluated by NIST, and meets the strict quality standards established by leading automotive and aerospace manufacturers such as General Motors and Pratt & Whitney.



Build productivity through collaboration in inspection processes. Geomagic Qualify's powerful report designer, user-defined views, color mapping, annotation, and numeric inspection data are easily embedded into standard 3D PDF documents for sharing and collaboration.

### FEATURES INCLUDE:

- Rapidly compare scan data to specific CAD models or an average of several scanned models.
- Visualize deviations in standard or user-defined color-mapped models.
- Immediately analyze 2D and 3D dimensions, geometric features, compare size, analyze fit, wall thickness and edges.
- Perform turbine blade alignment, analyze external and internal blade geometry, twist analysis and more. (requires optional Blade module)
- Produce a wide range of standard and user-defined reports, with support for 3D PDF.
- Supports a wide range of standard scanner, digitizers and hard probing devices.

### YOUR FREE TRIAL:

To get started, visit:

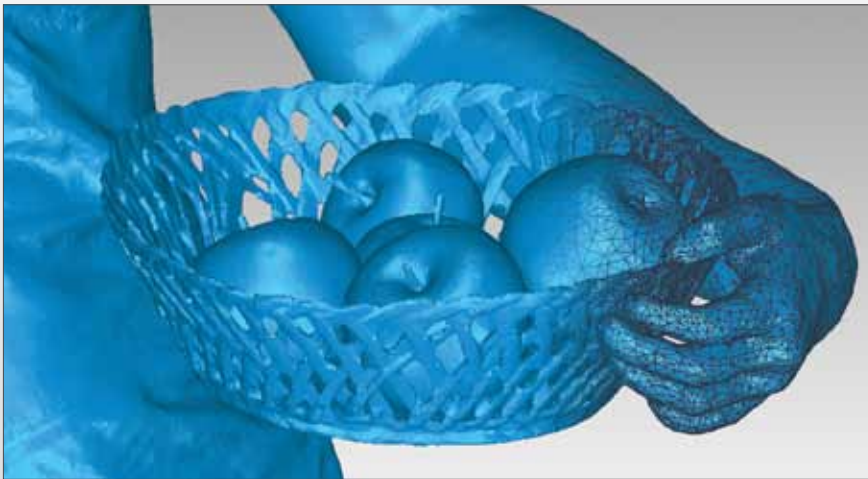
<http://www.majentasolutions.com/geomagic>

geomagic

# WRAP®

## 3D POLYGON SOFTWARE

Geomagic Wrap enables the transformation of point cloud data to 3D polygon meshes for use in manufacturing, design and analysis. Delivering highly competitive pricing and features, Geomagic Wrap intelligently processes complex point cloud data to revolutionize the way digital design and manufacturing is performed.



Accelerate manufacturing processes with the industry's most comprehensive and user-friendly range of polygon handling and editing tools.



Optimize accuracy with revolutionary scan data processing tools that merge multiple data sets, comprehensively manage point cloud clean up, and automatically build polygonal meshes to deliver very high precision, viable 3D data for use downstream.



Build productivity with the industry's most comprehensive, competitively-priced 3D point cloud processing software.

### FEATURES INCLUDE:

- Rapidly and automatically create accurate 3D polygonal models direct from point cloud and scan data
- Integrate with all major 3D MCAD systems as well as export in STL, OBJ, VRML, DXF, PLY, 3DS, PDF
- State-of-the-art User Interface and interactive tools deliver fast learning curves and rapid deployment for users
- Support for a wide range of standard scanner equipment

### YOUR FREE TRIAL:

To get started, visit:

<http://www.majentasolutions.com/geomagic>



[www.majentasolutions.com](http://www.majentasolutions.com)

Majenta Solutions Limited  
Majenta House  
Coptford Road  
Brentwood, Essex, CM14 4BS  
United Kingdom

Telephone : +44 (0) 1277 263 244

© 2010 Geomagic, Inc. All rights reserved. Geomagic, the Geomagic logo, Geomagic Studio, Geomagic Qualify, Geomagic Wrap, Wrap, 'the magic of making it simple', are all trademarks or registered trademarks of Geomagic, Inc.