

VMware Professional Services Virtual Desktop Manager

Overview

Desktop PCs present organizations with continuing manageability and security challenges. By using VMware Virtual Desktop Infrastructure (VDI), organizations deploy hosted desktops in order to benefit from improved manageability, streamlined deployment, and greater data protection and recovery.

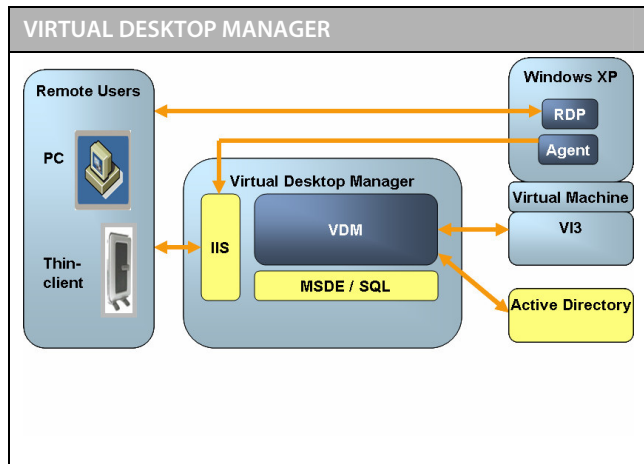
VMware Professional Services Virtual Desktop Manager is a critical component of a virtual desktop deployment. Organizations can deploy and manage virtual desktops efficiently across geographies by using Virtual Desktop Manager for connection brokering and session management.

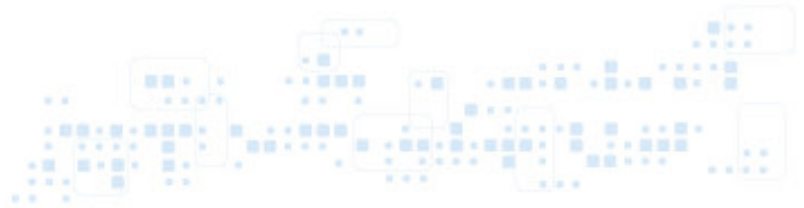
Virtual Desktop Manager is the only connection broker built using the VMware Software Development Kit (SDK) and supported by VMware Customer Support. Virtual Desktop Manager is only offered in conjunction with a VMware Professional Services engagement.

BENEFITS
<ul style="list-style-type: none"> • Reduce resources required to manage hundreds or thousands of virtual desktops. • Securely connect to VMware Infrastructure servers using technology based on the VMware Software Development Kit. • Provide business continuity by reconnecting to previous session after a failure.

Key Features

- **Self-service provisioning** of desktops by end users based on pre-defined access rules reduces administrative overhead.
- **Dynamic pools** automate policy-based expansion of available desktops.
- **Single sign-on** provides rapid provisioning and access of desktops.
- **Policy management** enforces corporate IT policies such as restrictions for contractors and automatic log off after a defined time period elapses.
- **Desktop reservations and leasing** enables administrators to pre-define usage patterns and, in some cases, reduce application license fees.
- **Audit and reporting** provides administrators with current and historical usage patterns tracked by session and desktops.
- **Session failover** allows users to seamlessly reconnect to the same session.
- **Broad thin client support** for Microsoft Windows XP and CE; Wyse S90/V90, S30, S10; and Linux clients.





How Virtual Desktop Manager Works

Virtual Desktop Manager consists of four components:

- Web-based application server for managing the user interface, connection brokering, and integrating with Microsoft Active Directory
- One or more proxy servers integrated with VMware VirtualCenter to manage requests and improve performance
- Database server for storing user preference and policies
- Virtual desktop agents

Administrators configure the desktop pools, access policies, leases, and permissions and define the desktop templates using VirtualCenter.

When a user logs in, his credentials are authenticated using Active Directory. The connect broker determines the best desktop available.

If the session is disconnected, the user can reconnect to the same session seamlessly using any supported device from any location.

Supported Environments

Supported client environments include:

- Microsoft Windows XPE and CE
- Wyse S90/V90, S30, and S10
- Linux

Supported virtual desktop:

- Microsoft Windows XP

Server requirements:

- Windows Server 2003 SP1 or later
- 512 MB RAM
- IIS 6 with ASP.NET enabled
- Network access to VirtualCenter, Active Directory domain controller, and database

Browser Support:

- Microsoft IE 6.0 or above

Database Support:

- SQL 2005

VIRTUAL DESKTOP INFRASTRUCTURE PILOT

The Virtual Desktop Infrastructure Pilot is designed to provide an installation, configuration, and integration for up to 25 pre-production virtual desktops with Virtual Desktop Manager. As part of the workshop, organizations receive Virtual Desktop Manager perpetual licenses for up to 25 desktops in a pre-production environment and Gold Support for one year from installation.

The four-day pilot includes:

- Onsite installation and configuration of Virtual Desktop Manager and up to 25 desktops from VMware VirtualCenter templates
- Knowledge transfer on best practices in virtual desktop infrastructure and the Virtual Desktop Manager
- Integration of Virtual Desktop Manager with Microsoft Active Directory and IIS

For More Information

To request a demonstration, contact your local VMware representative. More information about VMware software and services can be found at <http://www.vmware.com> and from your local VMware representative.

VMware warrants that it will perform these workshop services in a reasonable manner using generally accepted industry standards and practices. THE EXPRESS WARRANTY SET FORTH ABOVE IS IN LIEU OF ALL OTHER WARRANTIES, EXPRESS, IMPLIED, STATUTORY OR OTHERWISE WITH RESPECT TO THE SERVICES AND DELIVERABLES PROVIDED BY VMWARE, OR AS TO THE RESULTS WHICH MAY BE OBTAINED THEREFROM, AND VMWARE DISCLAIMS ALL IMPLIED WARRANTIES OF MERCHANTABILITY OR FITNESS FOR A PARTICULAR PURPOSE. VMWARE WILL NOT BE LIABLE FOR ANY THIRD-PARTY SERVICES OR PRODUCTS IDENTIFIED OR REFERRED TO BY CUSTOMER BY VMWARE. VMWARE WILL NOT BE LIABLE FOR ANY LOST PROFITS OR BUSINESS OPPORTUNITIES, LOSS OF USE, BUSINESS INTERRUPTION, LOSS OF DATA, OR ANY OTHER INDIRECT, SPECIAL, INCIDENTAL, OR CONSEQUENTIAL DAMAGES ARISING UNDER THIS AGREEMENT UNDER ANY THEORY OF LIABILITY, WHETHER BASED IN CONTRACT, TORT, NEGLIGENCE, PRODUCT LIABILITY OR OTHERWISE, REGARDLESS OF WHETHER VMWARE HAS BEEN ADVISED OF THE POSSIBILITY OF SUCH DAMAGES. VMWARE'S AGGREGATE LIABILITY UNDER THIS AGREEMENT WILL NOT, IN ANY EVENT, EXCEED THE FEES PAID BY CUSTOMER TO VMWARE UNDER THIS AGREEMENT. All materials provided under this workshop are copyrighted by VMware ("Workshop Materials"). VMware grants the customer of this workshop a license to use and make reasonable internal company copies of any Workshop Materials strictly for the purpose of facilitating such company's understanding, utilization and operation of its licensed VMware product(s). Except as set forth expressly in the sentence above, there is no transfer of any intellectual property rights or any other license granted under the terms of this workshop. If Customer issues a purchase order or other ordering document, the terms and conditions of which are in addition to or inconsistent with the terms and conditions of this Agreement, the terms and conditions of such purchase order or other ordering document will not be binding and will not modify this Agreement.

VMware, Inc. 3145 Porter Drive Palo Alto CA 94304 USA Tel 650-475-5000 Tel 877-486-9273 Fax 650-475-5001

© 2007 VMware, Inc. All rights reserved. Protected by one or more of U.S. Patent Nos. 6,397,242, 6,496,847, 6,704,925, 6,711,672, 6,725,289, 6,735,601, 6,785,886, 6,789,156, 6,795,966, 6,880,022, 6,961,941, 6,961,806, 6,944,699, 7,069,413; 7,082,598 and 7,089,377; patents pending. VMware, the VMware "boxes" logo and design, Virtual SMP and VMotion are registered trademarks or trademarks of VMware, Inc. in the United States and/or other jurisdictions. All other marks and names mentioned herein may be trademarks of their respective companies.